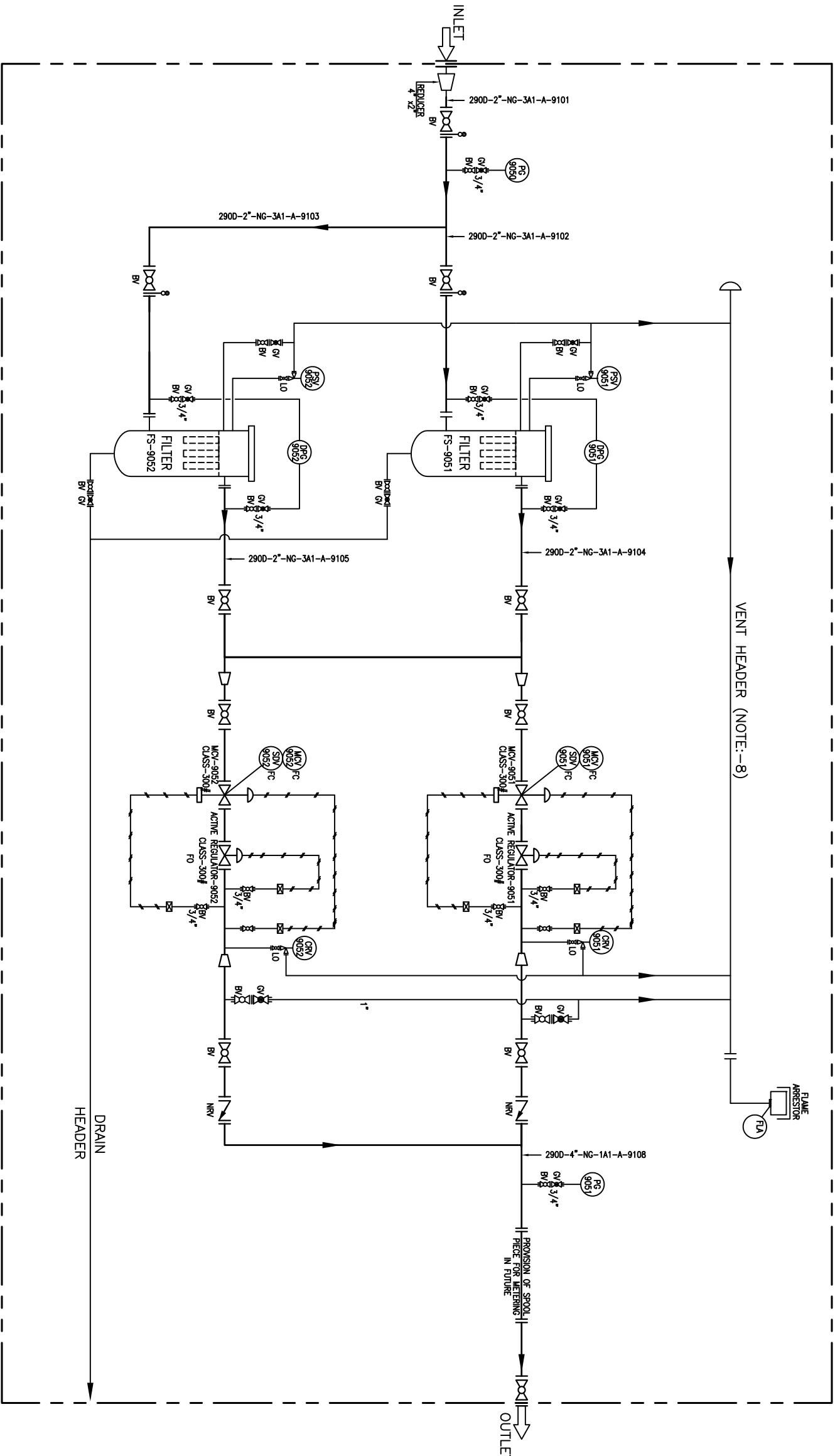


DRS-TYPE-2



VENT HEADER (NOTE:-8)

DRAIN HEADER

DESIGN CONDITION			
CATEGORY	FLOW RATE	INLET PRESSURE	OUTLET PRESSURE
SCMH	2000	kg/cm ² (g)	kg/cm ² (g)
TYPE-2		14-25	4-6
			4" x 4"

NOTES:-

1. INLET & OUTLET MATCHING FLANGES OR BLIND, STUD, NUT & GASKETS SHALL BE IN BIDDER SCOPE.
2. VENT WILL BE MIN 3.0 MTR HEIGHT FROM SKID BASE.
3. 3MM THK. COPPER JUMPER WILL BE PROVIDED AT EACH FLANGES CONNECTIONS.
4. DRAIN WILL RUN UP TO EDGE OF THE SKID.
5. THE LINE SIZE PROVIDED IN THE TABLE IS MINIMUM. THE VENDOR IS REQUIRED TO CHECK THE SUITABILITY OF LINE SIZE FOR THE PROPOSED FLOW.
6. MONITOR CONTROL VALVE & SDV SHALL BE INTEGRAL ASSEMBLY. SDV SHALL BE OF SLAM SHUT OFF VALVE & SHALL BE CLOSED IN EVENT OF HIGH PRESSURE & LOW PRESSURE SDV/MCV/PCV SHALL BE PILOT OPERATED.
7. VENDOR TO PROVIDE LOW POINT DRAIN AND HIGH POINT VENT WHEREVER REQUIRED.
8. ALL THE TAPPING TO THE VENT HEADER SHALL BE FROM THE TOP.
9. PRESSURE REGULATOR SHALL BE DESIGNED IN SUCH A WAY THAT INLET PRESSURE DOES NOT COME IN DIRECT CONTACT WITH THE MAIN VALVE DIAPHRAGM (i.e. LOADING TYPE OF REGULATOR ONLY SHALL BE ACCEPTED).
10. THE WHOLE SKID SHALL BE ENCLOSED IN A CABINET PROVIDED WITH LOCK & KEY, WITH FRONT HAVING TRANSPARENT HIGH QUALITY PLASTIC SHEET AND REST MADE FROM 16 GAUGE THICK CRCA SHEETS DULY PAINTED.

LEGEND:-

- NEW
- ← BUTT-WELDED BALL VALVE
- BUTT-WELDED GLOBE VALVE
- FLANGED BALL VALVE
- ◻ FLANGED GLOBE VALVE
- ∩ NON RETURN VALVE
- ⊖ PRESSURE GAUGE
- ⊕ TEMPERATURE GAUGE
- SPECIMALE BLIND

REV	DATE	REVISION	PREP'D	CHK'D	APP'D
C	23.02.11	ISSUED FOR CORRIGENDUM	VSR	M/S	HM
B	06.01.11	CLIENT COMMENT INCORPORATED	VSR	M/S	HM
D	22.11.10	ISSUED FOR TENDERING	VSR	M/S	HM

CLIENT
GAIL GAS LIMITED
 2nd FLOOR, HREC BUILDING
 A-2, SECTOR-2, NOIDA 201301

CONSULTANT
J.P. KENNY
 a Trading name of
WOOD GROUP ENGINEERING INDIA PVT. LTD.
 NEW DELHI

PROJECT
**CITY GAS DISTRIBUTION PROJECT FOR
 KOTA, MEERUT, SONIPAT & DEWAS**

TITLE
TYPICAL P & ID FOR DRS (TYPE-2)

SCALE	SIZE	JOB NO.	DRAWING NUMBER	SHEET	REV.
N.T.S.	A1	11-0290	11-0290-02-03-01-011	2 OF 2	C